



Rabat

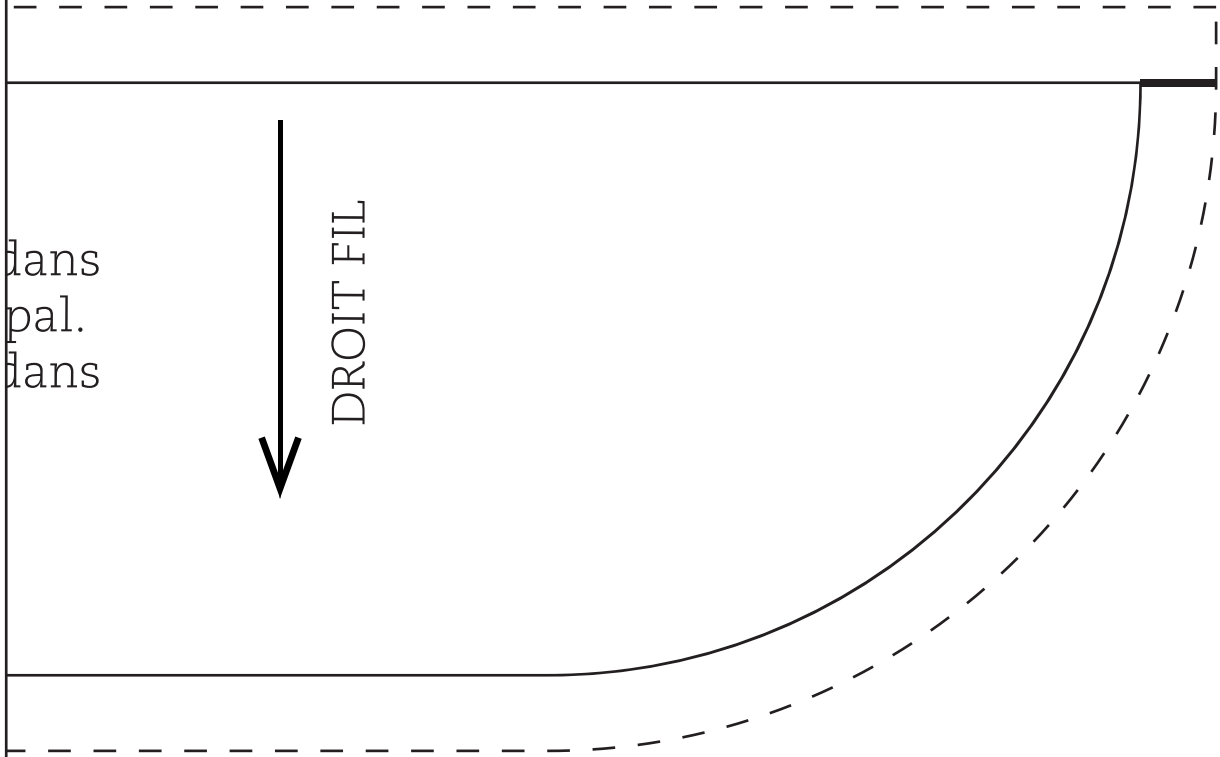
A couper 1 x c
le tissu princi

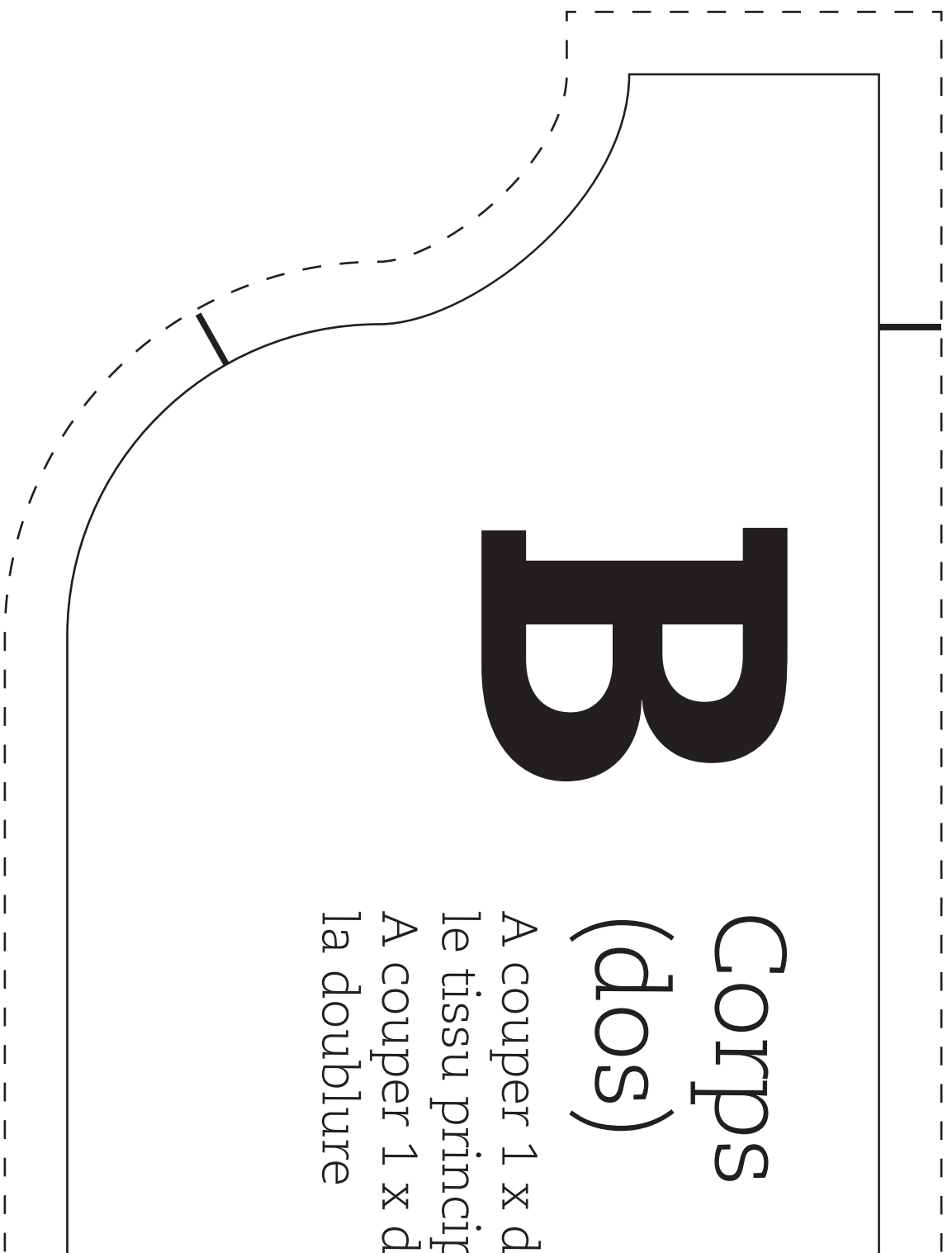
A couper 1 x c
la doublure

dans
pal.
dans



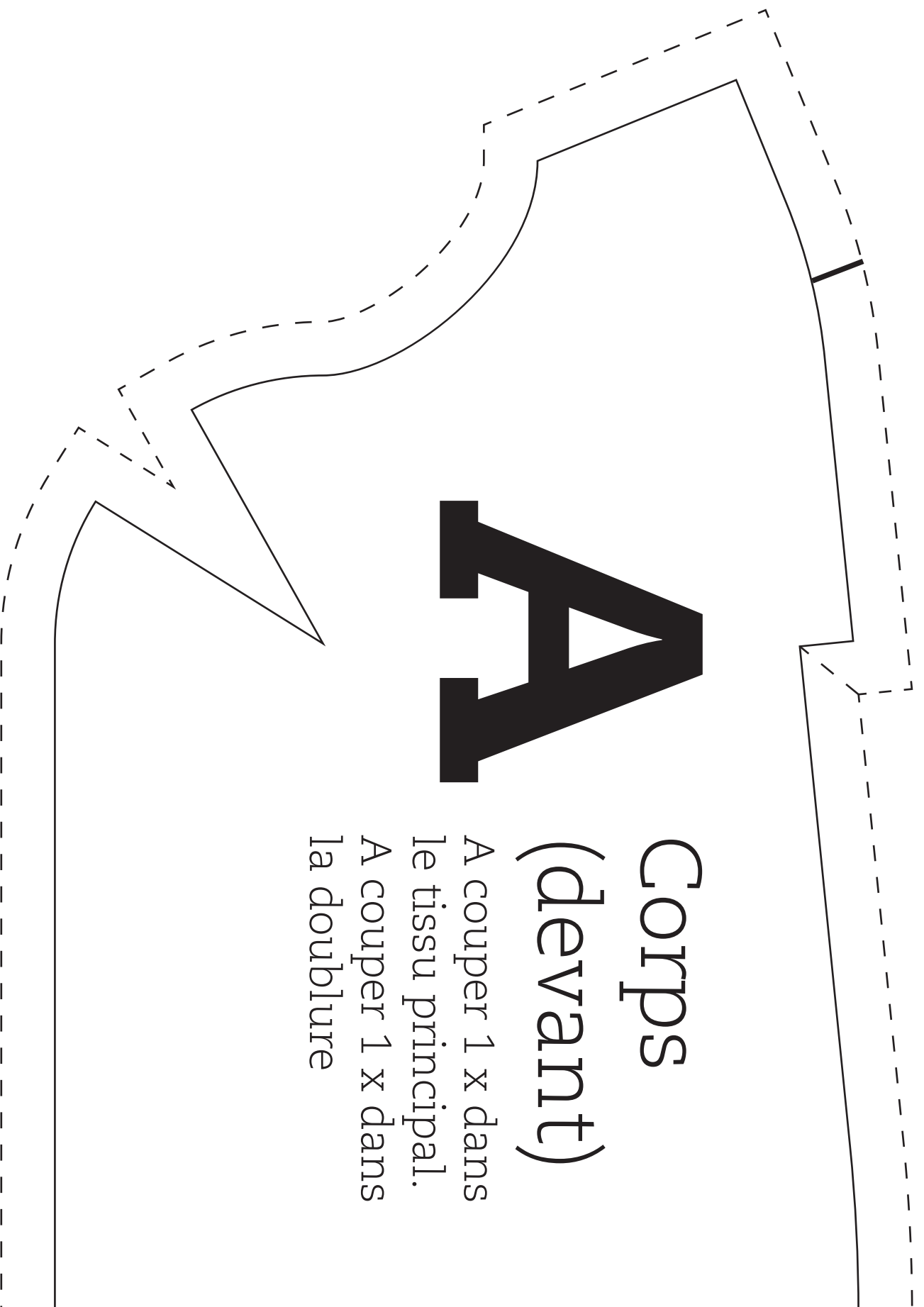
DROIT FIL





Corps (dos)

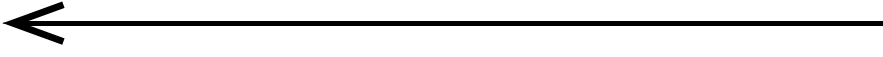
A couper 1 x d.
le tissu princip
A couper 1 x d.
la doublure



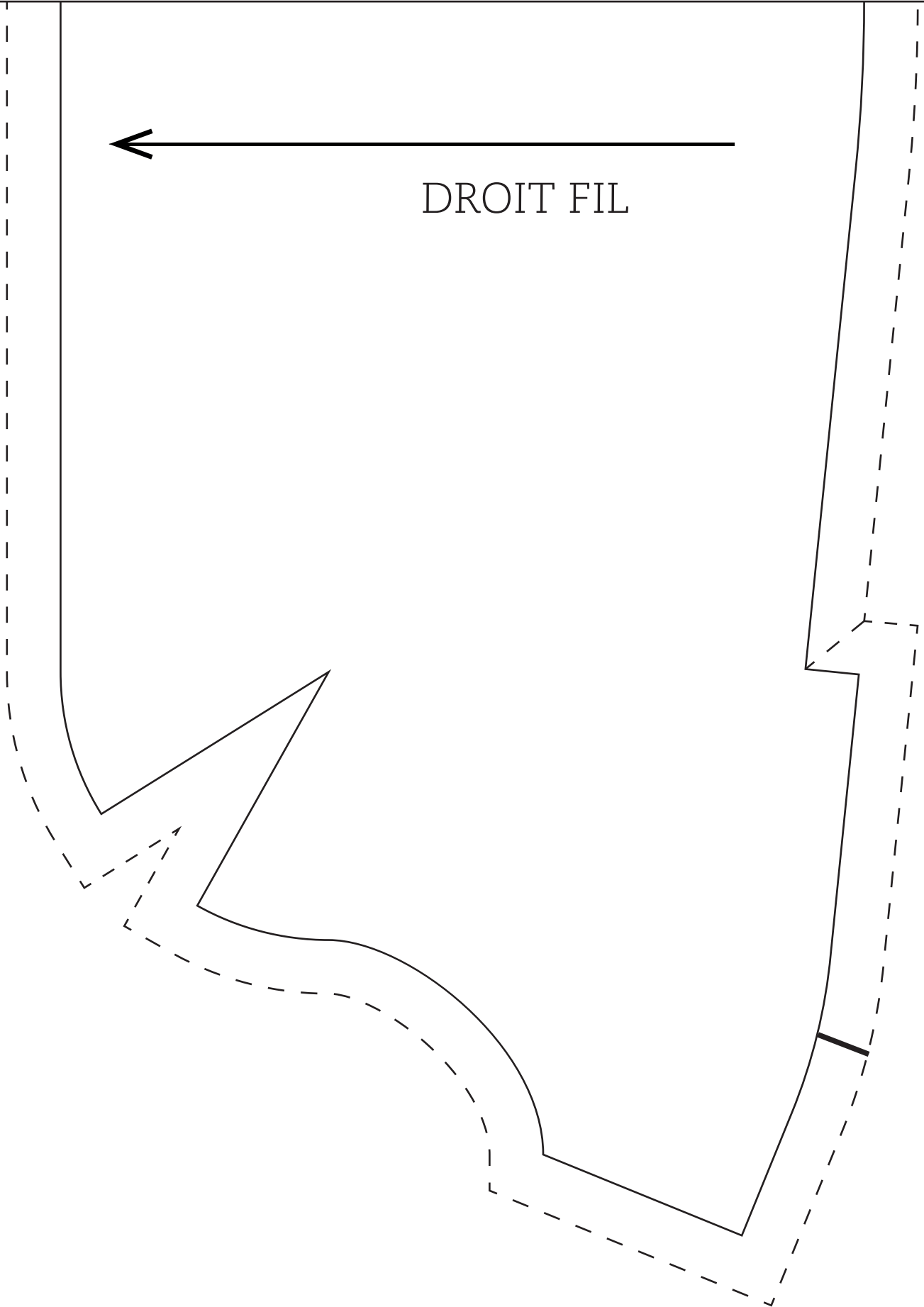
Corps (devant)

A couper 1 x dans
le tissu principal.

A couper 1 x dans
la doublure



DROIT FIL



ans
al.
ans



DROIT FIL

